

# 1 Update firmware

Firmware is the code stored permanently in hardware. It instructs your printer to do its tasks. Benefits of updating firmware include new features, enhanced functionality and improved performance.



**Caution** Do not open the print module, disconnect your printer from the computer or cut your printer power during the firmware update.

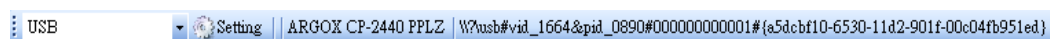
---

## 1.1 Update firmware in Printer Tool

This section describes how to update printer firmware in Printer Tool.

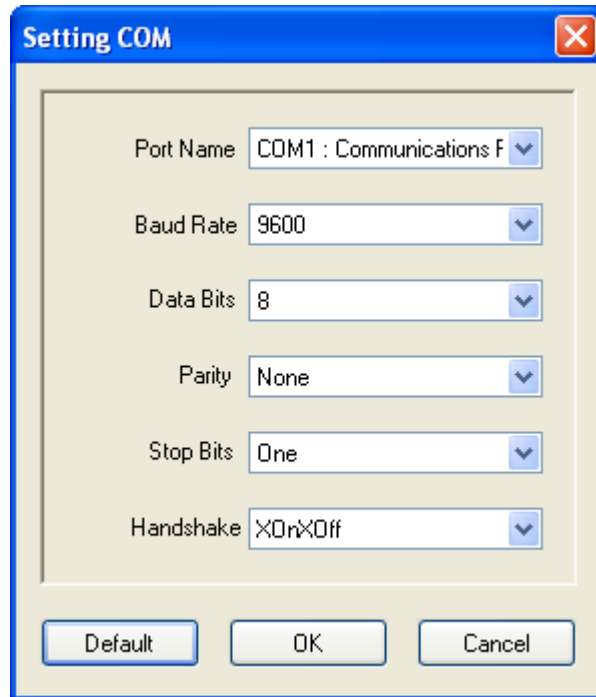
### 1.1.1 Update via the USB or COM port

1. Connect your printer and the computer with a USB or a serial cable.
2. Make sure the print module is closed.
3. Turn on your printer, and start Printer Tool.
4. In the **Input/Output Port** list, click **USB** or **COM**, and do one of the following:
  - If you are using the **USB** port, the **Port Name** and **Port Information** automatically shows the USB information. You don't need to do anything.

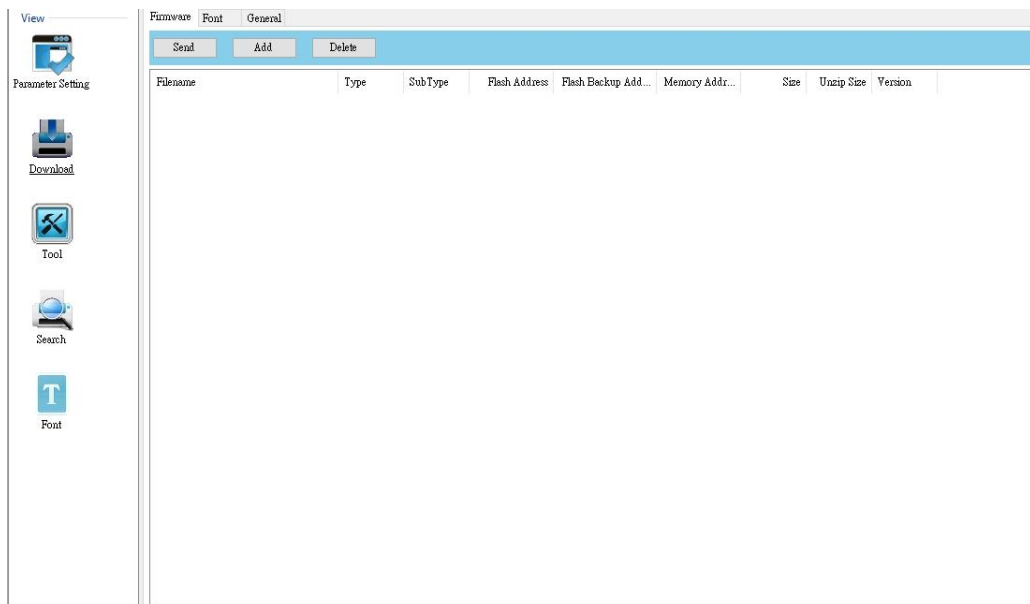


- If you are using the **COM** port, click **Setting**, and change the settings as you want. For example, you can change **Baud Rate** to a higher value to speed up the data transmission. Make sure the port settings are the same as those in the **COM** tab in **Parameter Setting**, or your printer won't work properly.

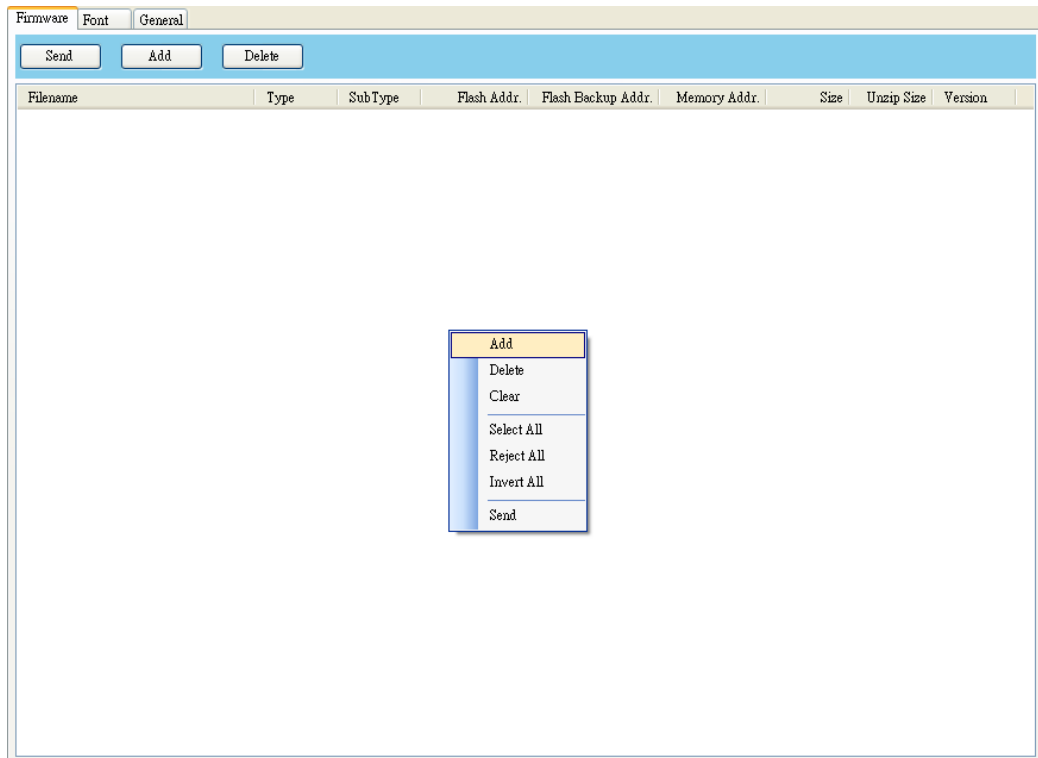




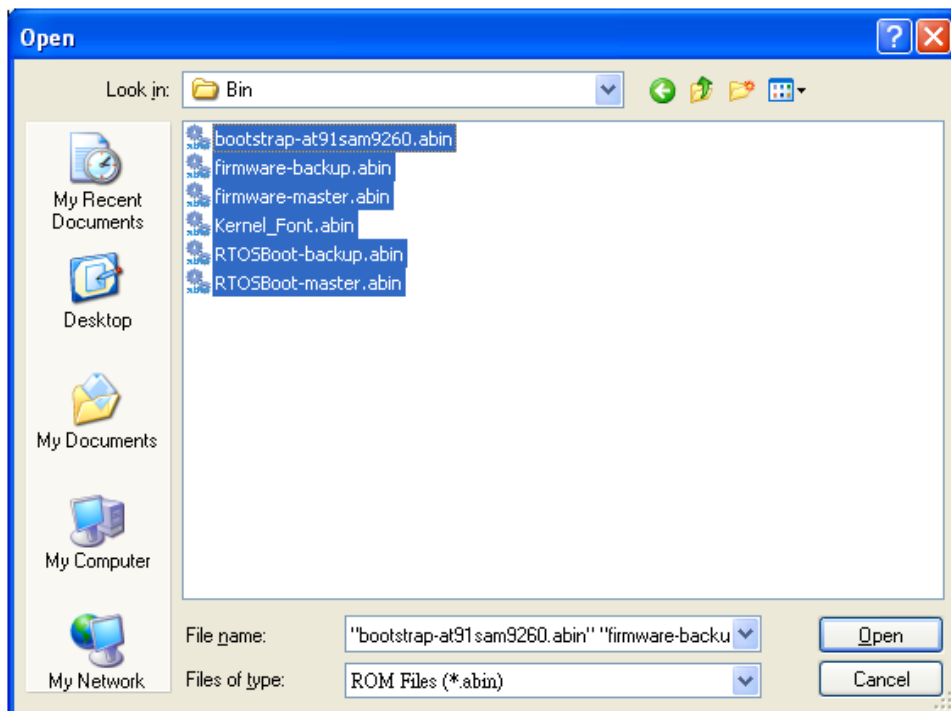
5. In the **Navigation** pane, click **Download**, and click the **Firmware** tab.



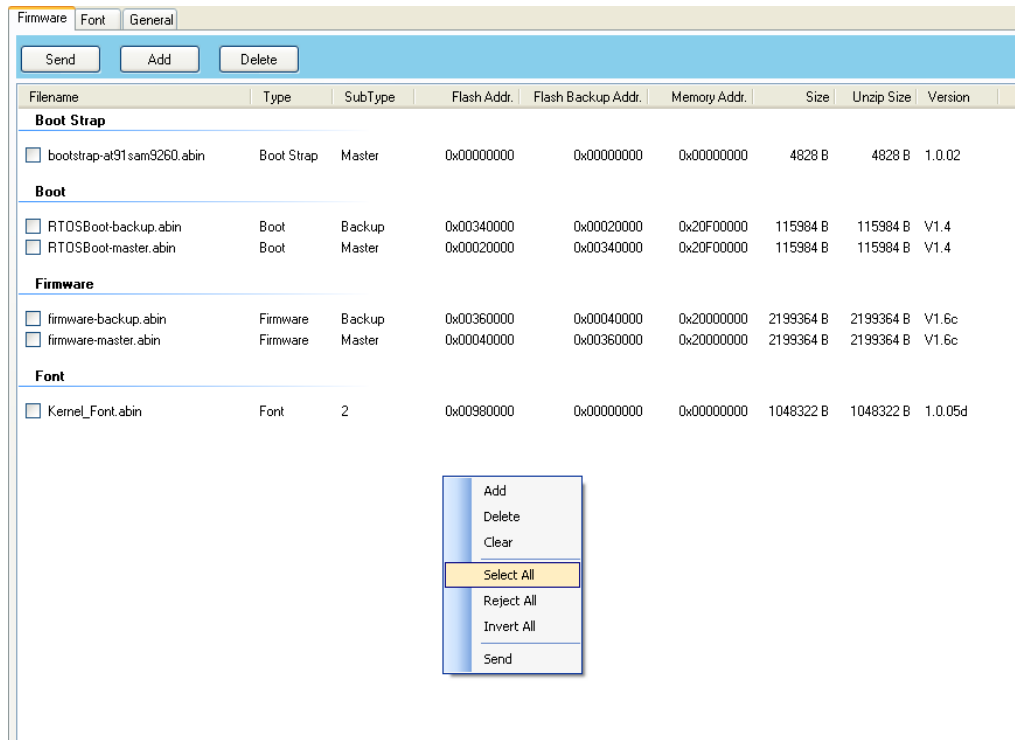
6. Right-click in the blank area and click **Add**.



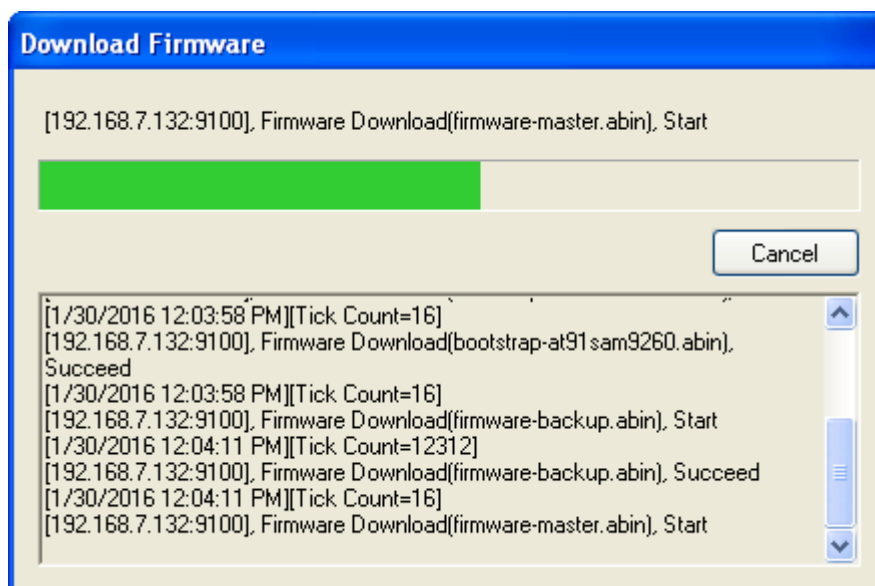
7. In the **Open** dialog box, browse to the folder that contains the firmware files. Select all of them and click **Open**.



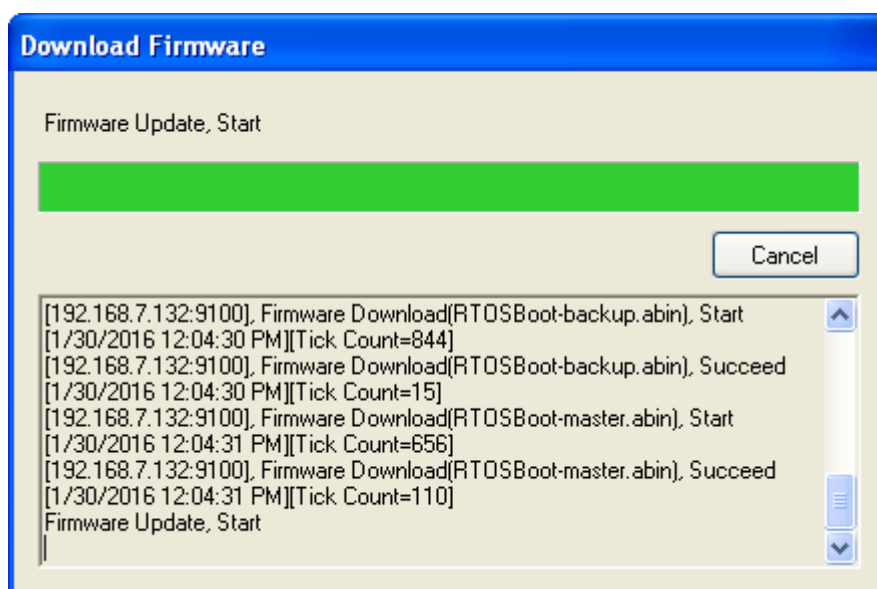
8. If you want to update specific files, select the check boxes of those files; if you want to update all of the firmware files, right-click in the blank area in the list, and click **Select All**.



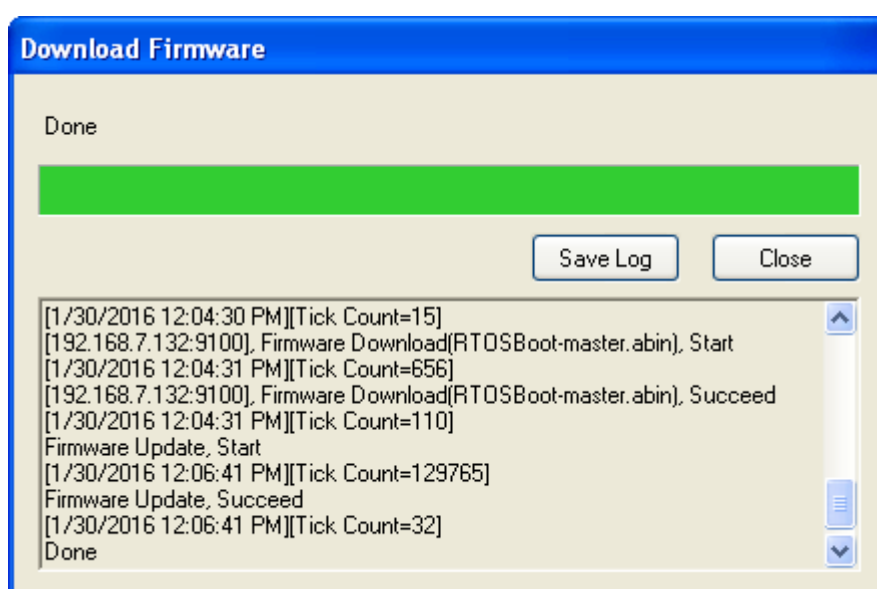
9. Click **Send** to send the firmware files to your printer. During the transmission LED blinks green. In the **Download Firmware** dialog box, the message shows the file your printer is downloading, and the progress bar indicates the progress of downloading.



10. When the data transmission is complete, your printer starts to update its firmware. In the **Download Firmware** dialog box, the message shows that your printer is updating the firmware.



11. When the update is complete, the message “Done” appears. At the same time, your printer restarts itself. Click **Close** to close the dialog box, or click **Save Log** to save the firmware update log.



**Note** Your printer may update the other copy of firmware after the message “Done” appears. There are two copies of firmware stored in your printer: master and backup. They are used to restore each other in case the firmware is lost or

---

corrupted. By default, the master is the primary copy. Your printer uses the backup if the master doesn't work.

---

## 1.1.2 Update via the LAN or Multi-LAN port

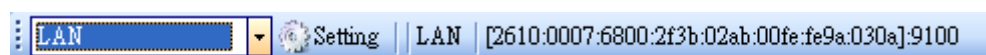
Before you update the firmware via the **LAN** or **Multi-LAN** port, you need to set up a network connection. For details, see [Set up LAN connection](#), [Set up IPv6 connection](#) and [Set up WLAN connection](#).

1. Connect your printer and computer to a network device (hub, switch or router) with Ethernet cables.
2. Make sure the print module is closed.
3. Turn on your printer, and start Printer Tool.
4. In the **Input/Output Port** list, click **LAN** or **Multi-LAN**, and do one of the following:
  - If you are using the **LAN** port, the **Port Name** and **Port Information** will show the LAN settings after you set up a network connection.

### LAN



### IPv6

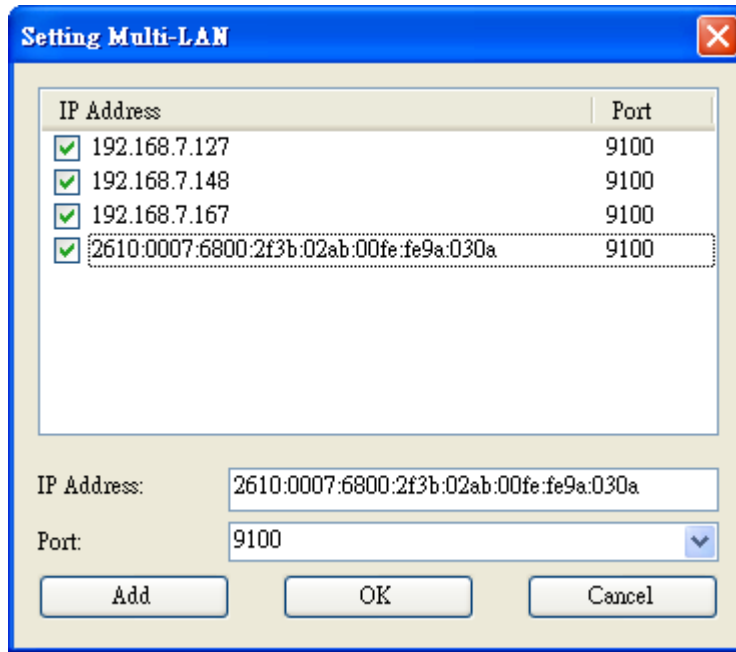


### WLAN

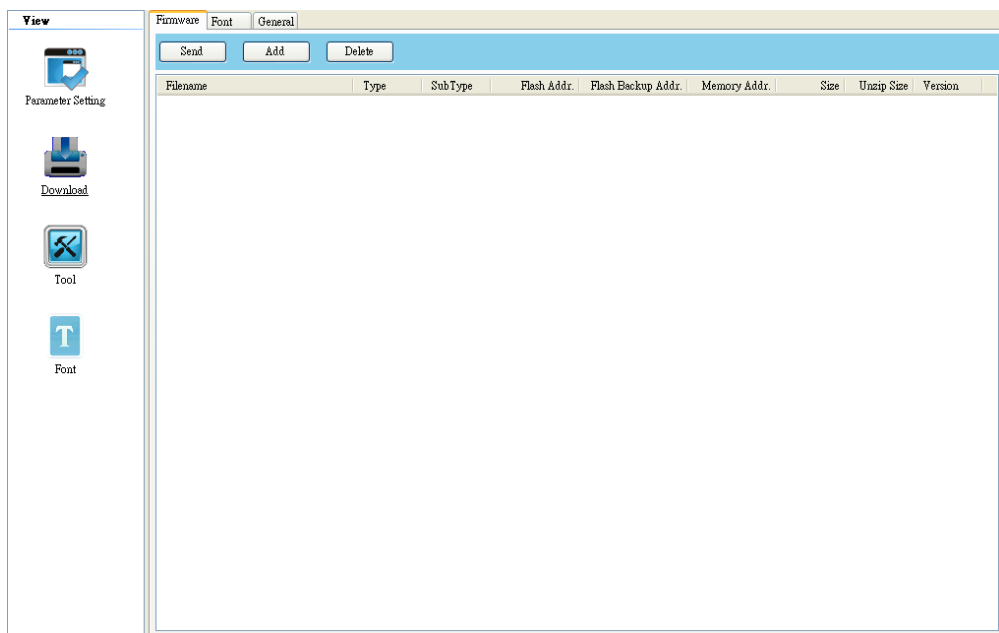


- If you are using the **Multi-LAN** port, click **Setting**. In the **Setting Multi-LAN** dialog box, in the **IP Address** box, enter your printer's IP address and click **Add**. If you want to update the firmware of multiple printers, keep adding their IP addresses, and then click **OK**.

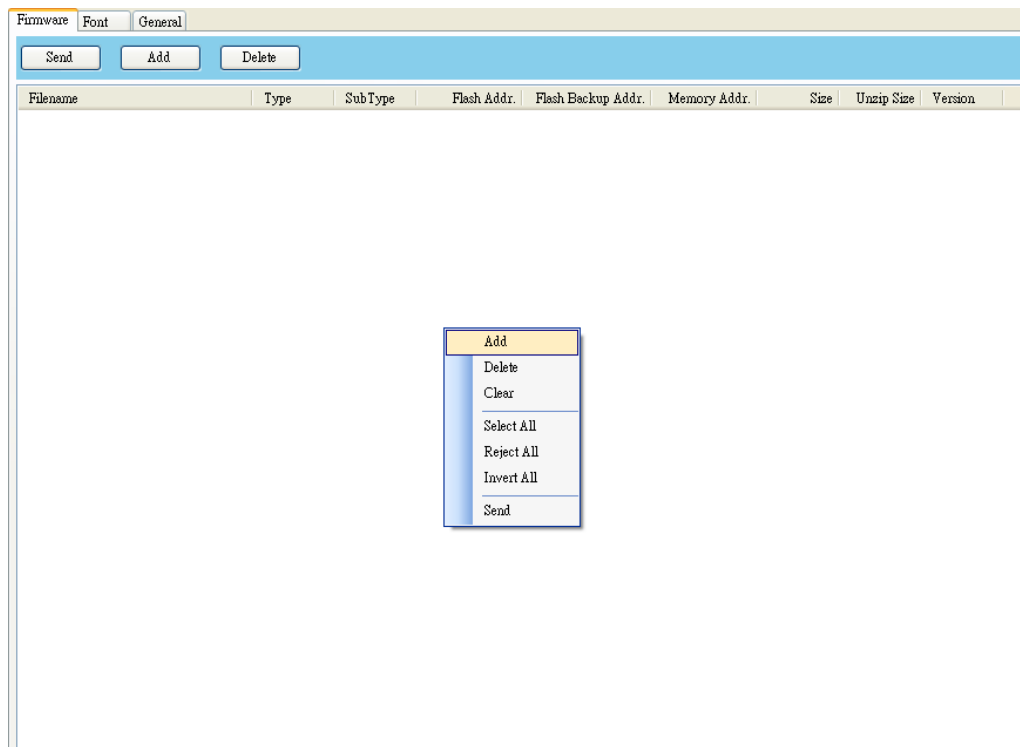




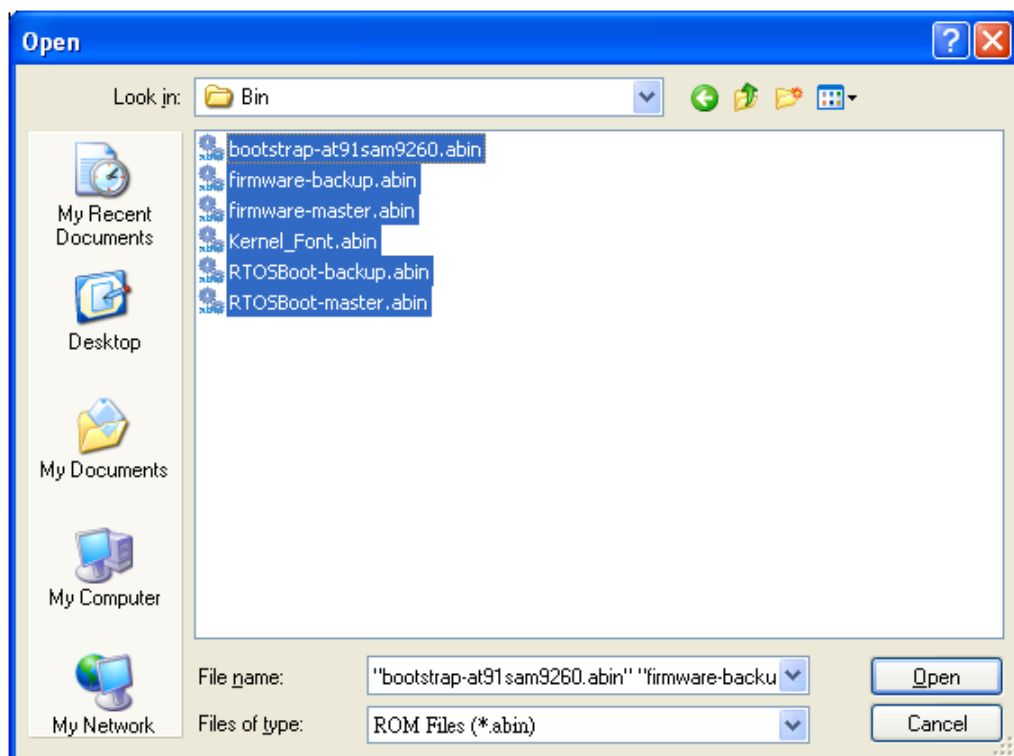
5. In the **Navigation** pane, click **Download**, and click the **Firmware** tab.



6. Right-click in the blank area and click **Add**.

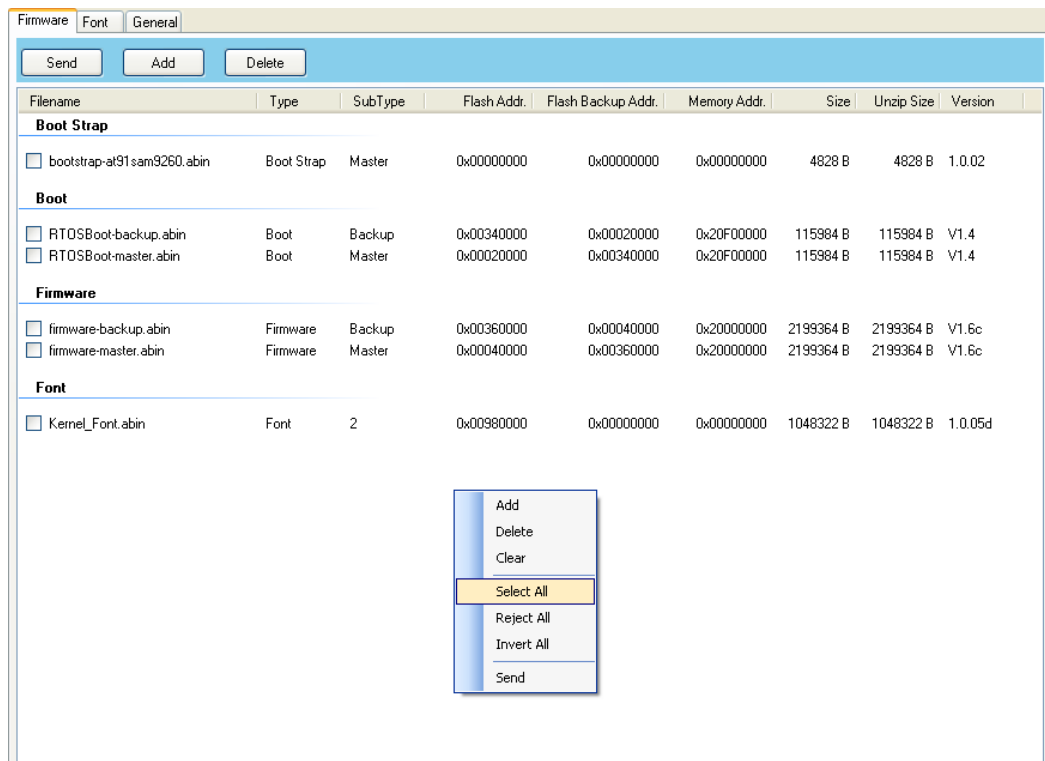


7. In the **Open** dialog box, browse to the folder that contains the firmware files. Select all of them and click **Open**.

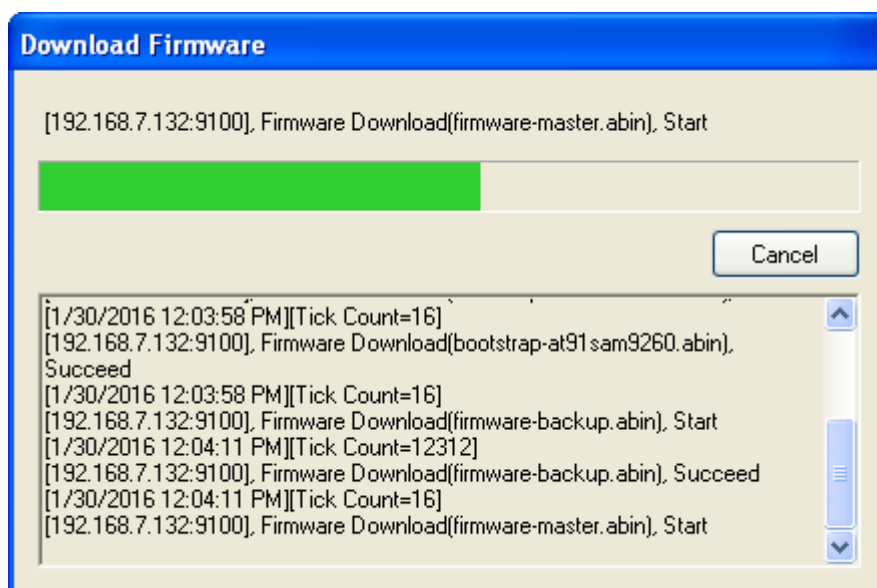




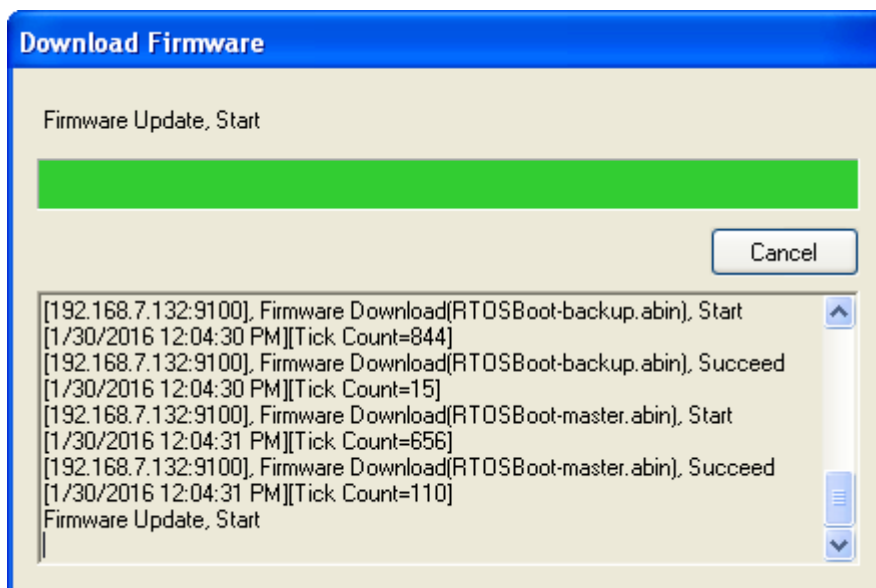
8. If you want to update specific files, select the check boxes of those files; if you want to update all of the firmware files, right-click in the blank area in the list, and click **Select All**.



9. Click **Send** to send the firmware files to your printer. In the **Download Firmware** dialog box, the message shows the file is downloading, and the progress bar indicates the progress of downloading.



10. When the data transmission is complete, your printer starts to update its firmware. In the **Download Firmware** dialog box, the message shows that your printer is updating the firmware.



11. When the update is complete, the message "Done" appears. At the same time, your printer restarts itself. Click **Close** to close the dialog box, or click **Save Log** to save the firmware update log.

